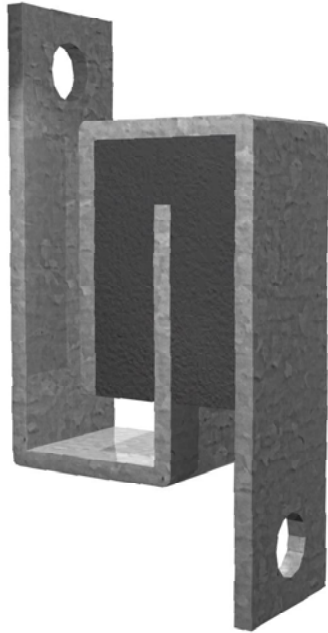


Decoupling for Walls Resilient Wall Brace



The **CDM-ISO-WH3 resilient wall brace** has been designed to reduce airborne, impact and structural noise, while minimizing the gap between the supported construction. This makes it an ideal noise reducing wall hanger for auditoria, cinemas, recording studios, music facilities, apartments, hospitals, etc.

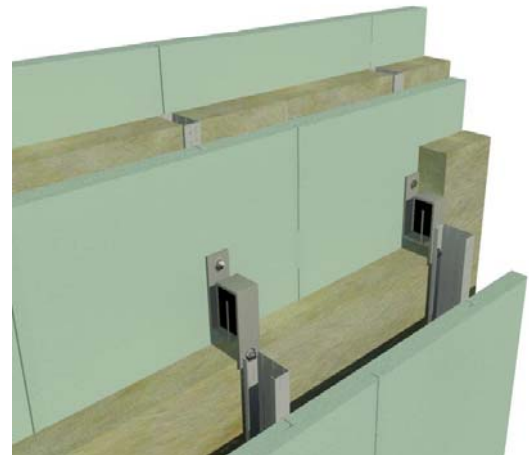
The **CDM-ISO-WH3** wall hanger creates a resiliently coupled mass-spring-mass system, when used with wood- and steel-frame studwalls.

Features:

- Easy to install
- Reduces transmission of sound energy
- Minimum void depth = $\frac{1}{4}$ " or $1\frac{3}{4}$ " [2 or 45 mm]



Installation – wet setup



Installation – dry setup

TECHNICAL SPECIFICATIONS

- Spacing depends on construction and loading
- Maximum horizontal force: 150 lbf [675 N]
(for a deflection of $\frac{1}{4}$ " [2mm])
- Resilient Material Density: 1000 kg/m³
- Resilient Material Shore Hardness: 50-60 A

