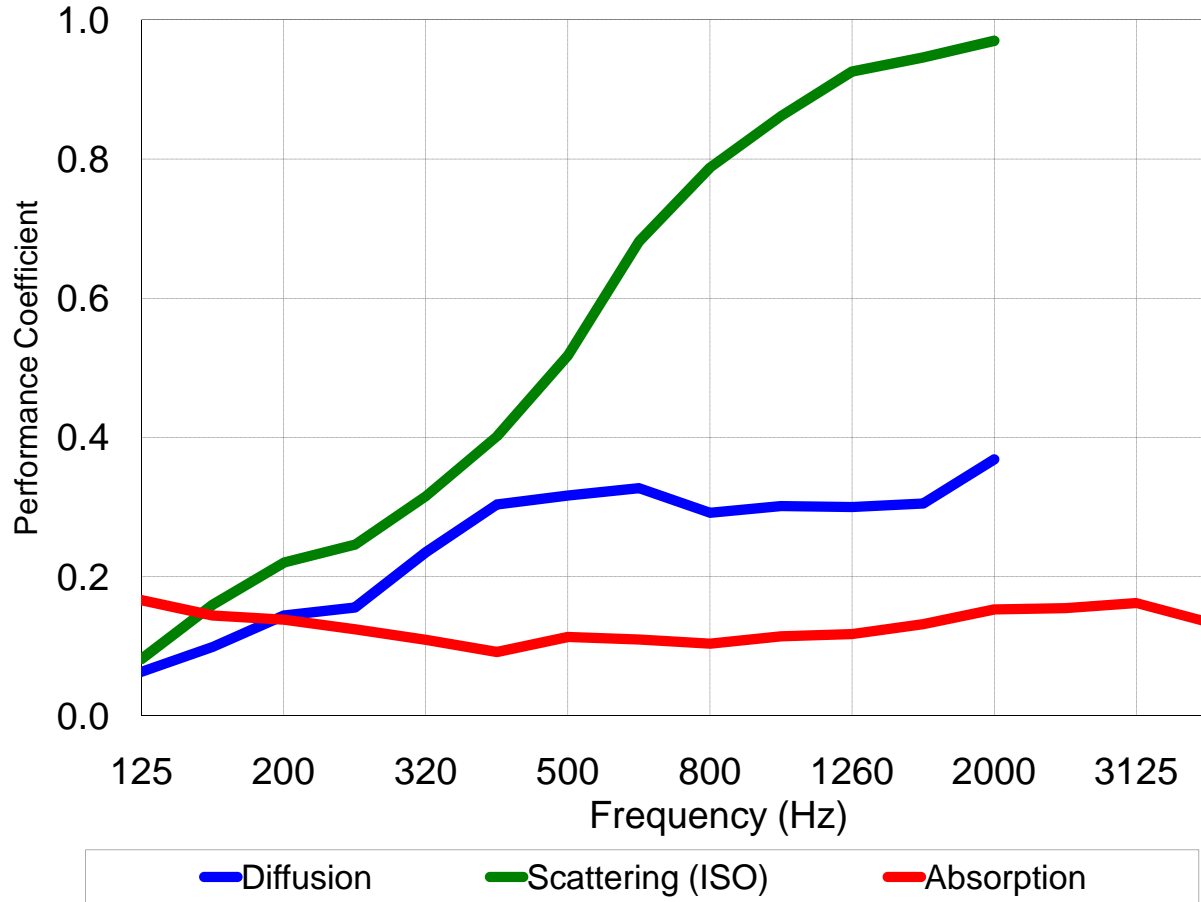
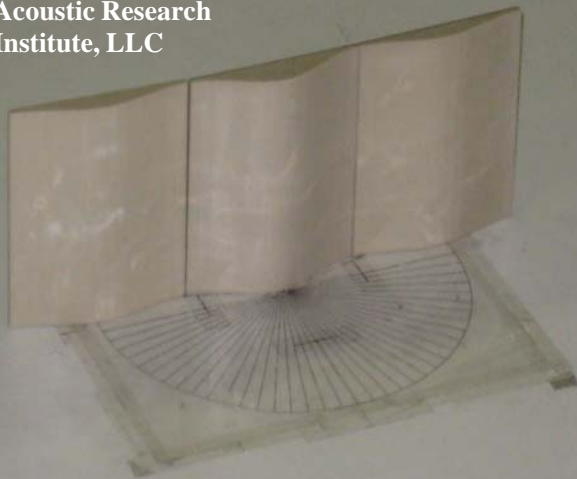




Waveform™ Gaussian
Random Incidence
Performance Data



Chesapeake
Acoustic Research
Institute, LLC



| f (Hz) | Diffusion | Scattering (ISO) | Absorption |
|--------|-----------|------------------|------------|
| 100 | 0.02 | 0.07 | 0.18 |
| 125 | 0.06 | 0.08 | 0.17 |
| 160 | 0.10 | 0.16 | 0.14 |
| 200 | 0.14 | 0.22 | 0.14 |
| 250 | 0.16 | 0.25 | 0.12 |
| 320 | 0.24 | 0.32 | 0.11 |
| 400 | 0.30 | 0.40 | 0.09 |
| 500 | 0.32 | 0.52 | 0.11 |
| 630 | 0.33 | 0.68 | 0.11 |
| 800 | 0.29 | 0.79 | 0.10 |
| 1000 | 0.30 | 0.86 | 0.11 |
| 1260 | 0.30 | 0.93 | 0.12 |
| 1600 | 0.31 | 0.95 | 0.13 |
| 2000 | 0.37 | 0.97 | 0.15 |
| 2500 | | | 0.15 |
| 3125 | | | 0.16 |
| 4000 | | | 0.14 |